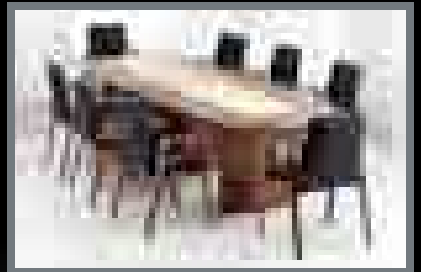
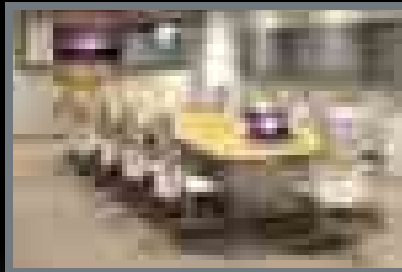
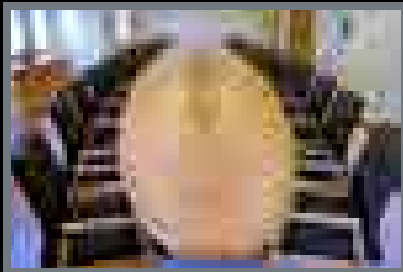


OVERVIEW OF

# Conference Tables & Conference Seating



**flexible**   
OFFICE FURNITURE & INTERIORS

tel: **0161 444 8411**



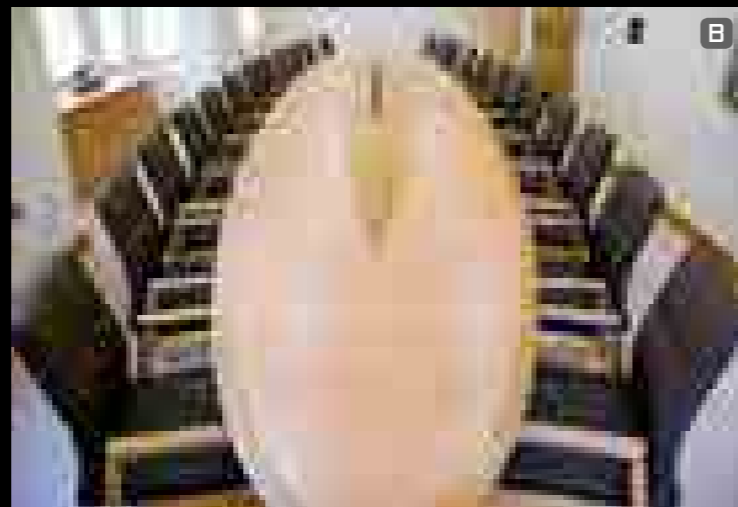
Fulcrum

Ambus

Modular Tables

X-Range

Seating

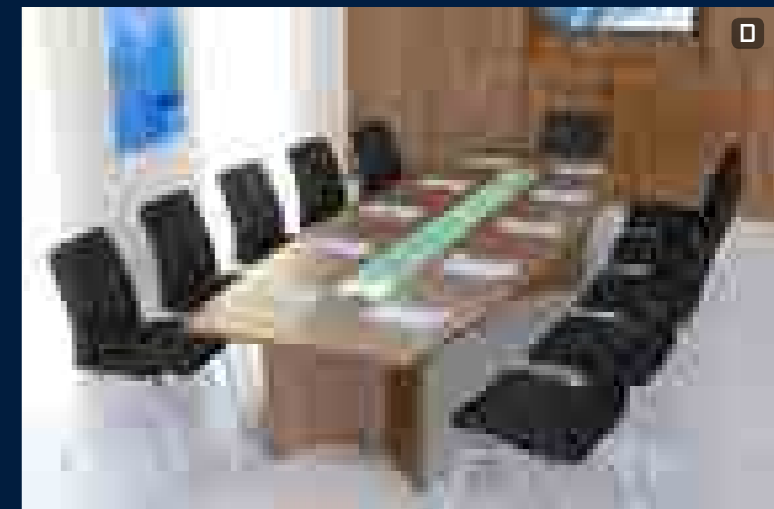
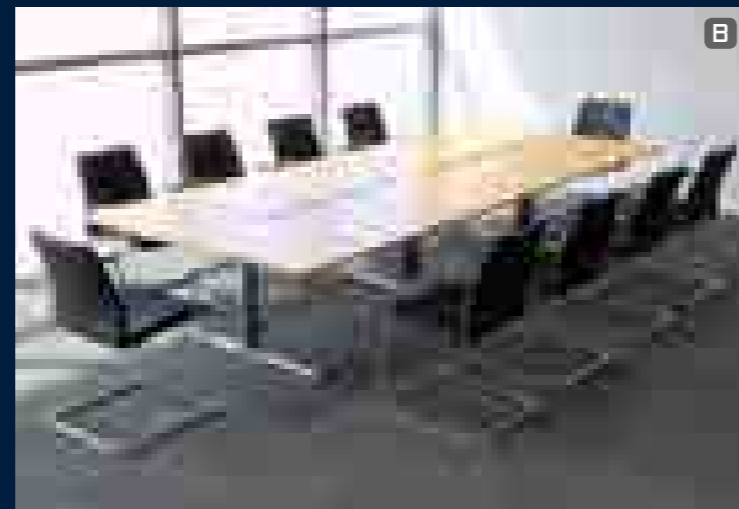


- A** Barrel shape table on wing bases, aero edge, in maple with birds eye maple inlays, ebony detail lines and frosted green glass cable management tiles. Fulcrum F4 chairs in Black leather.
- B** Custom narrow table, oval, in natural cherry with solid oak aero edge, burr oak inlay with ebony detail surround and hinged cable management flaps. Matching Fulcrum F1 chairs in natural cherry with matching arms.
- C** D-end table on arc bases, in maple with ebony detail line and black lacquered cable management tiles. Matching Fulcrum F1 chairs in maple with black leather arms.
- D** Oval table on panel 'T' bases, aero edge in oak, inlay in caramel bamboo with ebony detail lines. Fulcrum F3 chairs with oak arms to match the edge.
- E** Barrel shape table in natural walnut on wing bases, with square lipped edge. In natural walnut with birds eye maple inlay and ebony detail line. Matching Fulcrum F2 chairs in natural walnut with polished aluminium arms.

Fulcrum conference tables offer an exceptional choice of standard sizes, shapes, bases, edges, finishes, inlays and cable management solutions. Bespoke table are available in any shape, size or specification.

To view the full Fulcrum brochure goto [sven.co.uk/fulcrum](http://sven.co.uk/fulcrum)  
For more Fulcrum images goto [sven.co.uk/fulcrumimages](http://sven.co.uk/fulcrumimages)

# Fulcrum

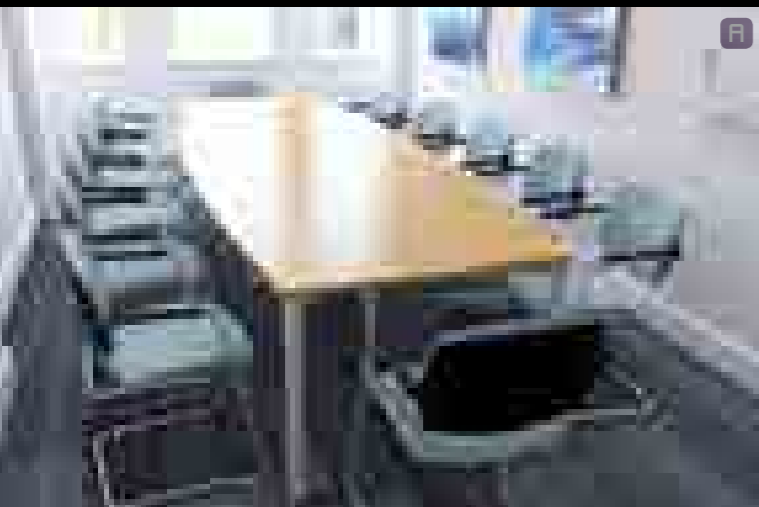


- A** Ambus D-end table on I-frames, in light oak veneer with hinged cable management flaps. Fulcrum F3 chairs with matching light oak arms.
- B** Rectangular table on double-upright T-bases, hinged flap cable management
- C** Ambus D-end table on pedestal bases in Cherry veneer. Matching storage. G4 chairs.
- D** Ambus barrel shape table in natural walnut, with lift-out cable management tiles in frosted green glass. Matching HiStore wall storage. Fulcrum F4 chairs.
- E** Table on box bases with hinged flap cable management

Ambus tables are available in a wide choice of veneer and MFC finishes, and offer a choice of nine base options and five top shapes in a comprehensive range of sizes. Optional cable management is offered by way of hinged flaps or lift out tiles, plus a further selection of bespoke cable management solutions. Cables may be neatly routed from the floor through all the bases (except pedestal bases).

To view the full Ambus brochure goto [sven.co.uk/ambus](http://sven.co.uk/ambus)  
For more Ambus images goto [sven.co.uk/ambusimages](http://sven.co.uk/ambusimages)

# Ambus



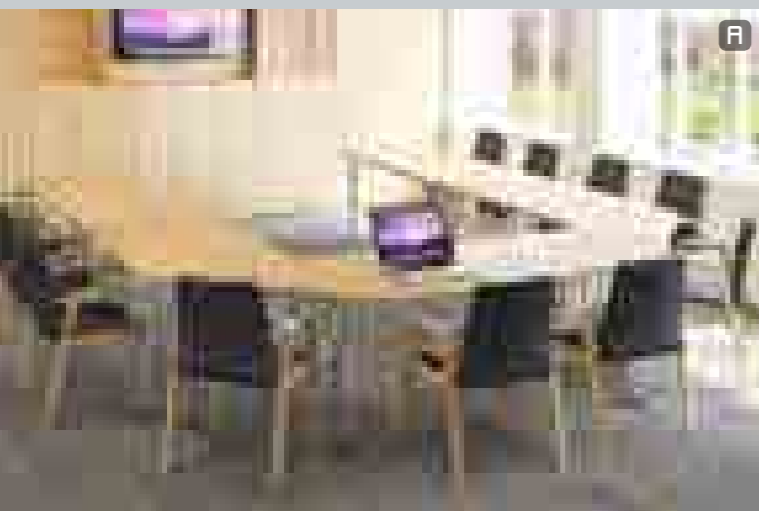
- A Barrel shape table on Silva frame with cable access ports, XRV3 chairs.
- B Rectangular table on Slate frame with cable access ports, XRV3 chairs.
- C Small X-Range reception desk in Maple MFC, XRV3 chairs.
- D Circular table 1200mm diameter on Silva frame, XRV4 chairs.
- E 5000 x 1200mm rectangular table seating sixteen, XRV3 chairs.

X-Range enables you to create attractive and practical receptions very cost-effectively, in a choice of three wood grain MFC finishes and white. XRM seating ideally complements X-Range reception desks, but may equally be used with our other reception desk ranges.

To view the full X-Range brochure goto [sven.co.uk/xrange](http://sven.co.uk/xrange)  
For more X-Range images goto [sven.co.uk/xrangeimages](http://sven.co.uk/xrangeimages)

# X-Range

## & XR Seating



- A** Sectional tables on round chrome legs, Light Oak with Ebony inlays. Matching HiStore storage.
- B** Fliptop tables with optional modesty panels.
- C** Fliptop tables with optional hinged cable management flap and cable tray
- D** Sectional tables on round chrome legs, in natural walnut. Matching Ambus storage. Fulcrum F3 chairs.
- E** Fliptop tables on T-frames, in light cherry MFC. Matching Ambus storage. G5 chairs and HB3 low seating.

**FlipTop tables**

**Sectional Tables**

**Folding Tables**

**O** To view the full Modular Tables brochure goto [sven.co.uk/modtables](http://sven.co.uk/modtables)  
 For more Modular Tables images goto [sven.co.uk/modtablesimages](http://sven.co.uk/modtablesimages)

# Modular Tables

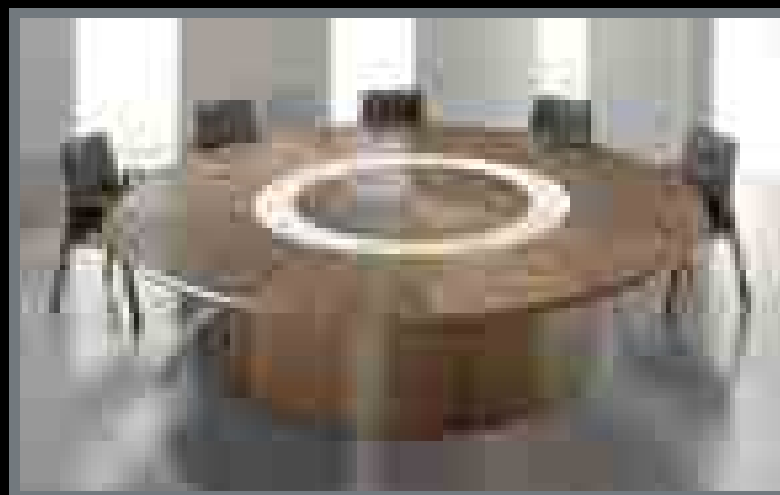
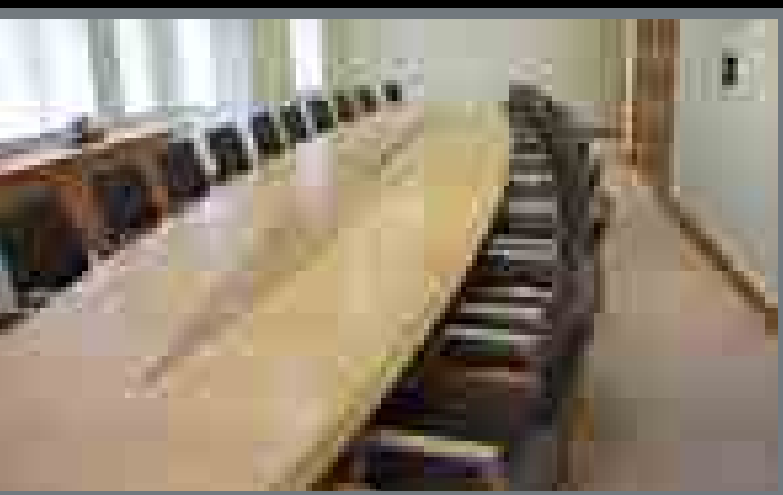


- A HBB**  
Sleek, contemporary conference chairs on chrome frames, with moulded arms with soft-touch inserts. Available with medium back (as shown) and high back. Matching swivel and working chairs.
- B Fulcrum F1**  
xxxConference chairs with exquisitely finished solid hardwood frames. The polished aluminium arms may be capped in fabric, leather or in timber (as shown) to match the frame. Optional Freefloat™ tilt mechanism. Illustrated in light oak.
- C Fulcrum F2**  
xxxA variant of the F1 described above, with a more angular frame profile and one-piece arm. Arms in timber (as shown), in polished aluminium or gloss piano black. Illustrated in natural walnut.
- D Fulcrum F3**  
The same comfortable profiles seat shell as the F1 and F2, mounted on a cantilever steel frame. Polished aluminium arms capped in fabric, leather or timber.
- E Fulcrum F1**  
As F3 above, but on four legged frame with the option of our unique Freefloat™ tilt mechanism.
- F Fulcrum F1**  
As 'B' above, but in maple with leather capped arms.
- G Ele**  
Exceptionally comfortable, timeless design, available with medium back (as shown) and high back. Matching swivel and working chairs.

To view the full Seating brochure goto [sven.co.uk/seatingbrochure](http://sven.co.uk/seatingbrochure)  
For more Soft Seating images goto [sven.co.uk/softseatingimages](http://sven.co.uk/softseatingimages)

# Seating

# Conference & Meeting



**flexible**   
OFFICE FURNITURE & INTERIORS

*When you're planning  
on office furniture*



Carrington Business Park  
Carrington  
Manchester  
M31 4DD

tel: **0161 444 8411**  
fax: 0161 872 8347

email: [info@fbe-uk.com](mailto:info@fbe-uk.com)  
[www.flexible.uk.com](http://www.flexible.uk.com)